

# Real Fairyland

*Fairyland will not be without its essential facilities: a café, a meeting room, toilets and washrooms. The existing access to the site, presently used as a Wildflower Centre, will be improved and made safer.*

*A Welcome Building will incorporate a seasonally refreshed display of regional and British wildlife, its folklore and heritage, while also including office space for the charity's HQ, and signposting other conservation projects to visit in the region.*

*Construction, energy and materials will all be visibly sustainable. Parents, grandparents and children will have the possibility for incidental learning about environmental and social sustainability through experiencing how Fairyland works.*

*Growing and explaining wildflowers from locally sourced seed will continue and be expanded to supply more families with the material to start their own woodland banks or mini-meadows at home.*

*A mixture of charitable and commercial activities will enable the site to ultimately become self-financing.*

*For more information about the Fairyland Trust's plans visit [www.fairylandtrust.org](http://www.fairylandtrust.org) or call Sarah Wise on 01328 710165*

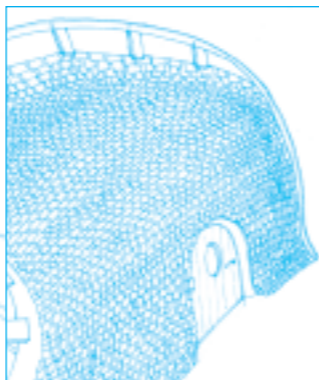
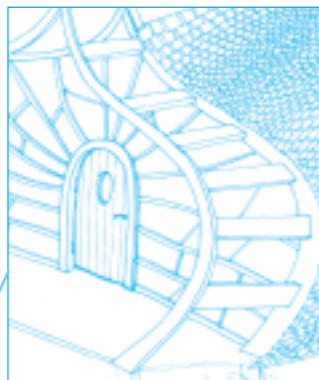
A Magical  
Landscape  
where imagination  
leads discovery by the hand

Fairyland Trust Charity No 108977.  
Company limited by guarantee no 4210261 (Engl)  
Registered address: Summerhill House,  
1 Sculthorpe Road, Fakenham, NR21 9HA

Correspondence Address:  
PO Box 14, Wells Next The Sea, Norfolk NR23 1WB

Patron: Princess Helena Moutafian MBE, DSTJ

Trustees: Phil Rothwell, Jonathan Smales,  
Joanna Yarrow, Jane Vaus, Richard Robinson



## An introduction to the Fairyland Trust

### The First Fairyland

**Britain's first Fairyland could soon be providing thousands of children and their families with a first taste of the magic of nature.**

The Fairyland Trust is an innovative conservation charity that creates opportunities for children and families to learn more about their natural heritage through starting from where they are at – with an interest in all things magical and mysterious. Since it was established in 2001, the Trust has welcomed over 10,000 children to its Fairy Fairs, workshops and other events. Now it hopes to set up its first permanent site, enabling it to expand its activities and operate the year round.

Every Fairyland Trust activity – from making wildflower gardens to magic wands, fairy crowns and dens in the woods has

an element of learning about nature and natural history built into it. But for the children and their listening parents it doesn't seem like education but a fun day out in a beautiful place.

Described by one visitor as 'an organic Disney', the Fairs have been run in the summer months on farms and estates loaned by generous supporters. To begin with they attracted a few hundred people, now they can attract 6,000 over two days. They require 150 trained volunteers and specialists to create and lead the workshops, facilities and theatrical elements, which make them a vivid, entertaining and intense experience.

